

BEST·HOME

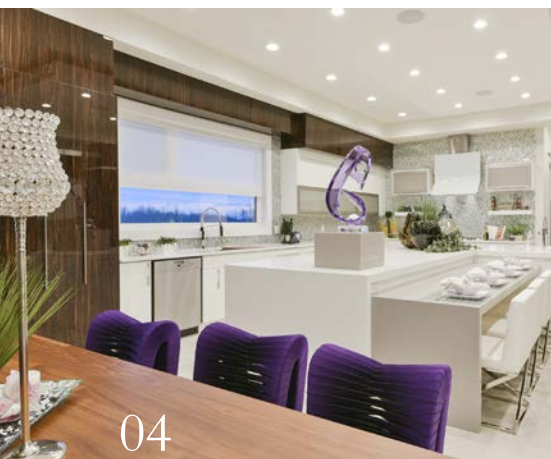
SPRING/SUMMER 2016

ALBERTA



\$6.95 CDN





Style

03 editor's letter

What's New & Different?

62 Cosentino Centre

82 K&W Audio

90 Naturally Modern

Pieces of You

72 Sunview Custom Cabinets

Custom Home Features

The Play of Feng Shui

Platinum Signature Homes brings the big top to Edmonton.

Now It's Personal

Sartori Homes blends innovation with individual style.

Metro Chic

Augusta Fine Homes finds balance with the finer things in life.

Reno Right!

Alair Homes changes everything for the better.

The View

Wolf Custom Homes delivers compelling interior and exterior views.

The Dance of Design

Astoria Homes reveals the movement of function, features, and design.

Back to Back Modern

Stonewater Homes brings light and layouts to glass houses.

Natural Wonder

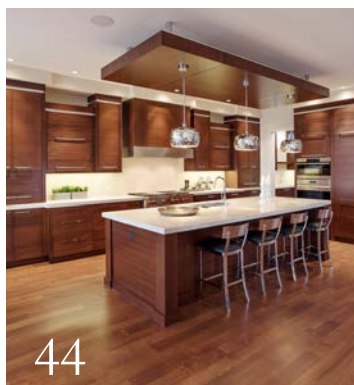
Eclipse Custom Homes dazzles with personalized rustic splendour.

SAM I Am!

Treehouse Developments features a real winner for the inner city.

Bungalow Brilliance

Homes by Wallance brings in the light in sight of home.



BEST·HOME

Editor in Chief
Cindy Chobanik

Production
Collin Wo

Printer
Mitchell Press

Photographers
Edmonton 360 Tours
Merle Prosofsky
Michael Heywood
Earl Raatz
Henry Georgi
PJ Hombert of PropertyGuys.com
Mutch Photo & Bookstrucker Photography

Contributor
Cindy Chobanik

Publisher
Best Home Magazine Inc.

Mailing Address
(and return undeliverables to)
504 Arlington Drive S.E.
Calgary, AB, T2H 1S5
Tel: (403) 270-2378 or (403) 714-0175

Subscriptions

For a one year subscription, please complete the form on page 53 and enclose a cheque. For address changes email production@besthomemagazine.com

You can also purchase digital copies of Best Home from the Apple Newsstand application or from our website www.besthomemagazine.com.

BEST HOME MAGAZINE is published twice
a year by Best Home Magazine Inc.

Contents © 2016. All rights reserved.

Material in this publication may not be reproduced in any form without permission of the publisher. Neither the publisher nor its representatives or advertisers will be held responsible for any omissions or errors found in the magazine.

Canada Post Publication Mail Agreement #40014317

editor's letter



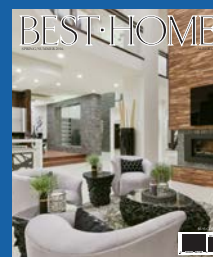
*T*his issue—or is it summer—brings us an exciting preview of things to come. With award-winning homes showcasing what sets them apart, the possibilities are endless with wondrous views and a cast of amenities that keep lifestyles active and serenity supreme. The selection of locations, architectural styles, and conveniences also ensure a personal match for all.

The builders themselves refuse to be outdone, with homes of unique attractions and hospitable function that afford the quality, comfort, and finishes that tick the boxes of most wish lists. From timber frame to uniquely modern structures, they typify the range of what Alberta's most innovative and creative custom homebuilders can achieve.

And with summer finally here and more room to roam as outdoor areas open a scenic extension of our lifestyle, perhaps it's time to consider a family addition. Build a memory—visit your local humane society or shelter and make your house a home.

Cindy Chobanik
Editor in Chief

Comments or inquiries can be emailed to
cindy@besthomemagazine.com



by Platinum Signature
Homes on page 4.



by Sartori Homes
on page 16.



The largest show home in Edmonton exhibits big style, big function, and even bigger attractions. Eloquently articulating the concept of custom, this exciting and original design catapults Platinum Signature Homes' vision to the status of a remarkable art piece of modern architecture.

The grand, bistro-inspired, white kitchen exhibits its waterfall-edge quartz with a built-in breakfast bar beneath a dropped bulkhead. Brushed nickel handles and a glass backsplash add sparkle and shine amidst continuous high-gloss, lacquered cabinetry. The adjoining stylish nook provides additional casual dining with a butler's pantry off the kitchen.

THE PLAY OF FENG SHUI



A freestanding rectangular basin rests in a river stone base next to a glittering wall of glazed and textured ceramic tile enhanced with curved mirror panels. Solid wood interior doors are scored with opaque glass inserts.



The sleek, open-tread staircase features maple construction with a double handrail and tempered glass inlays.



A glazed, ceramic tile divider provides a wall-mounted sink with a contemporary chrome, single lever faucet on one side and commode on the other. Curved walls are decorated with hand-painted wallpaper.



Warmed, ceramic tile floors edge floating dual vanities beneath custom shelving and rectangular vessel sinks. An air-jetted Origami bath hosts a four-piece chrome faucet beside the shower that is clad in stainless steel and glass mosaic tile that includes a recessed rain-fall shower head, dual body sprays, and hand shower.

"We are a luxury custom home builder, specializing in modern construction and contemporary home design," shares Sunny Sahni, owner of Platinum Signature Homes who together with his wife Seema provide the concept-to-completion package of exquisite quality and excellence. This dynamic duo offers the desirable combination of stellar construction and impeccable interior design that is personally addressed by Seema's partner company, Flaunt Interiors.

Offering a wide array of decorating, staging, and design services that follows the principles of feng shui, Seema explains, "I see the plans from a design point of view and incorporate the features and elements of feng shui—earth, water, fire, wood, and metal—to bring a positive energy flow into the home. We are flaunting modern new home ideas and fashions unlike anything Edmonton has ever seen before." Taking the guesswork out of interior design, Flaunt Interiors provides innovative interior solutions that are inspirational, decorative, and functional for today's lifestyle.

Creative and detail oriented, Platinum Signature Homes first step is to assess wants and needs and make recommendations. "We get into the client's shoes and visualize what they may want," admits Sunny Sahni, who strives to create spaces that reflect their client's unique personality and design aesthetic.

Hosting dramatic and enticing layouts that encompass 12,730 square feet on three developed levels, Sunny comments that even though the Araliya is large, it remains intimate in the sense that each space shares proportional relevance to the rest of the home. "Due to its scale, we wanted to avoid a hotel feel, which

FANCY DOORS AND MOULDINGS



**Commercial Doors • Interior Doors • Exterior Doors
Windows • Hardware • Tools**



4421 Roper Road NW
Edmonton, AB T6B 3S5

Tel: 780-432-7700
Fax: 780-432-7710

info@fancydoors.com

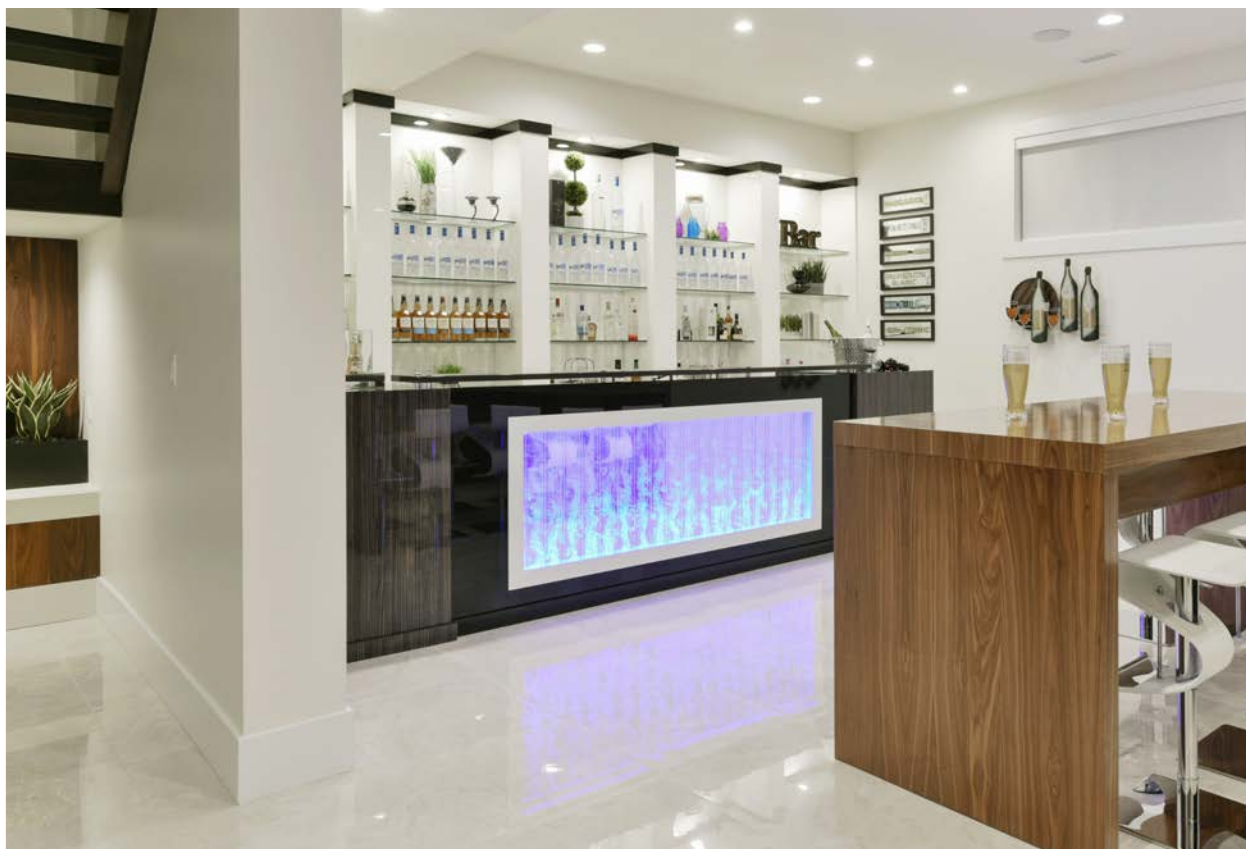


www.fancydoors.com



The lower level leads one to a spacious entertainment centre where a home theatre room, golf simulator, and guest suite with his and her ensuite join to provide a full level of entertainment and comfort.

Tasteful and luxurious, the downstairs bar exhibits built-in seating in front of the full wet bar with Chroma therapy lighting enhancing its water feature beneath glass shelving accented with LED lighting.





Smooth acrylic stucco in a trio of grey, charcoal, and silver/white mimics the palette of the interior with an energy saving EIFS system. Long board cladding in knotty pine, tops linear spans of ten millimetre topless glass with matching aluminum railings for unobstructed views. Stack stone details add texture alongside a maple front entry and complementary garage doors.

PAYLESS WHOLESALE

FLOORING & LIGHTING INC.





VERSACE

roberto cavalli

&

Tonino Lamborghini

Tiles Now Available

- Porcelain
- Granite
- Carpet
- Ceramic
- Hardwood
- Laminate
- Medallians
- Mosaics
- Lighting
- Granite Counter Tops

New Showroom Location

5000 sq. ft.

Corner of 50 Street & Roper Rd.

Over 7,000 sq. ft Showroom open at 18415 104 Ave

Supply & Installation Available



Head Office - 18415 104 Avenue
New Showroom - 4982 Roper Road
Edmonton, Alberta
P: 780.487.2700 • F: 780.487.2707
WWW.PAYLESSFLOORS.CA

Distributor and Wholesale Prices for the General Public

Unbeatable Quality at Unbeatable Prices!

Large In-stock supplies Available!

was jointly achieved through creative room transitions such as floor and ceiling heights, architectural supports and dividers, as well as fireplace and water features.

A dream home of extended details and convenience, each of the six bedrooms has its own ensuite and walk-in closet amidst multi-functional areas than can easily transition as the family grows. “Obviously there is enough room for everyone and was designed for those who entertain or have large, extended families,” adds Sahni.

“We are situated on one of the widest lots on Windermere Drive and built a flat roof home to take advantage of the views overlooking River Ridge Golf Course and the North Saskatchewan River,” continues Sahni, admitting that this was what inspired the design with its four balconies and 1,200-square-foot roof deck for maximized enjoyment of the desirable landscape.

With multiple at-home amenities, the Araliya houses a five-car garage, a generous patio, nine bathrooms, four fireplaces, two kitchens, a golf simulator, two wet bars, a home theatre, and



LAFLEUR
CABINETS

Specialists in Custom Designed Kitchens,
Granite, and Quartz Countertops

780.532.0210 • lafleurcabinets.com • 12810 99 Street, Grande Prairie, AB



Showcasing entertaining function within its stylish décor, the dedicated home theatre features movie reel wall panels and two tiers with theatre chair leather seating and an oversized, custom lounge for comfortable viewing atop zebra print carpeting.

A walnut strip inlay defines the fireplace chase with etched granite surround that warms the family room. Opposite, the custom, main level wet bar features a metal panel insert on the island and high-gloss, lacquered cabinetry.

exercise room, nanny suite, two studies, and a meditation room. The Control 4 automation system further provides entertainment and comfort, integrating audio/video and lighting throughout the home for ambience and convenience at a touch of a button.

The innovative interior selections reflect a décor that hosts art-inspired tile, three water features, hand-painted wallpaper, custom murals, and metalwork to name but a few. “Our visitors, which have been many, leave either speechless or effusive in their praise,” admits Sahni. The details in every corner, furnishings, and the flow with its positive energy all integrate in terms of colour.”

modern windows home



Fashionable finishes, contemporary profiles and sophisticated design.

Find your inspiration at our Edmonton, Calgary and Lethbridge Design Gallery locations.

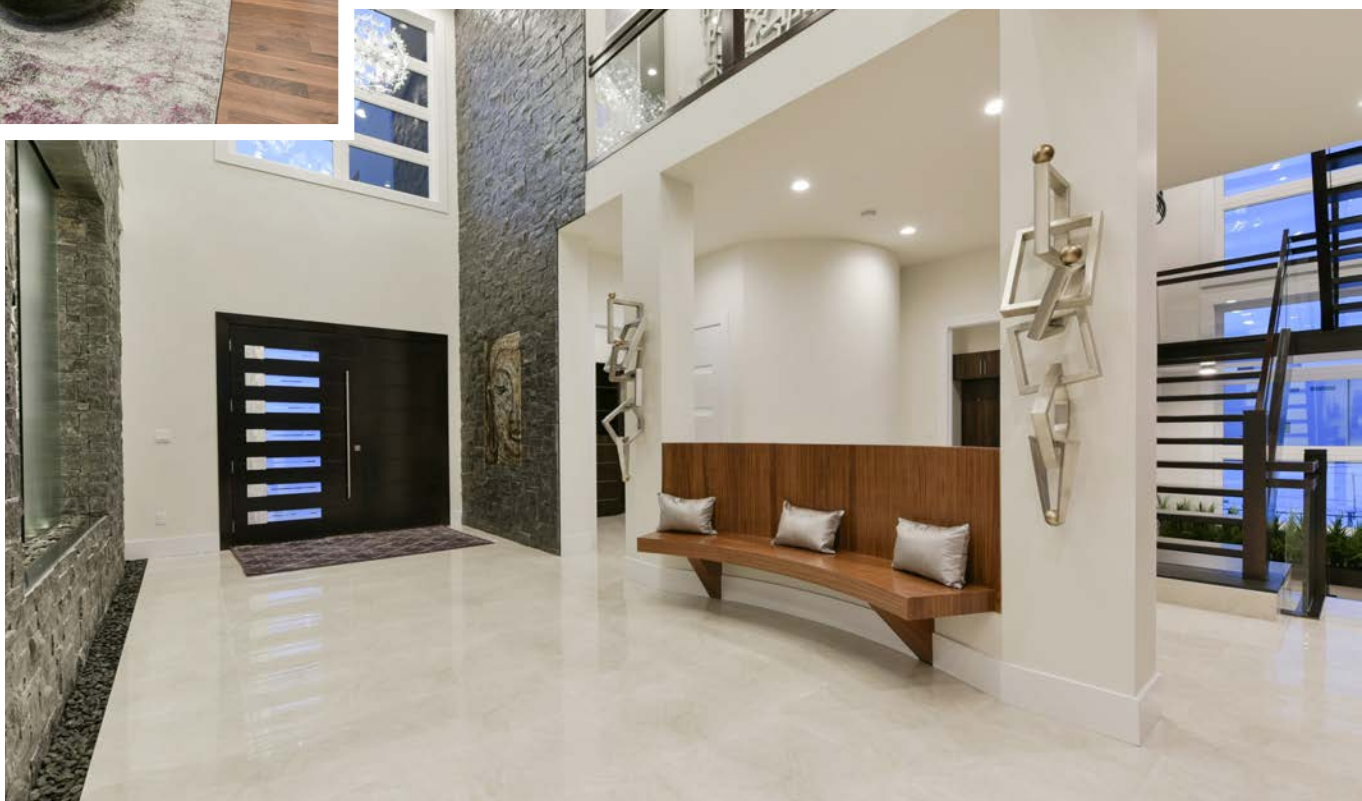
all about you.





Walnut hardwoods provide a warm anchor to upstairs flows where walls transition to create intimate yet open spaces. The bonus/study area hosts a snack station and has a study area with walkout patio. Three spacious bedrooms coexist with the elegant master bedroom retreat.

An expansive entry provides an open invitation with 23-foot ceilings, large-format ceramic tile, and a large adjoining water feature made of stack stone with dual, tempered glass panels that separate dining room flows. Built-in walnut bench seating offers comfort beneath the maple railing overlooking the main floor.



The Araliya is for sale at \$6,179,000. It is open for viewing
Monday to Thursday from 12:00 to 6:00pm, and
Saturday and Sunday from 12:00 to 5:00pm.

A special thanks to the following:

Heritage Hardwood
Orest Kuszka – Architect
Flaunt Interiors
Fancy Doors & Mouldings
Payless Flooring
Craig's Plumbing
Ultimate Stair & Railing
Dhillon Lighting
Dee Vee Electrical
Wilson Stucco
Top Floor Coatings
Urban Granite
Durabuilt Windows & Doors
Anand Carpentry & Construction
Fine Edge Cabinetry
Pacific Art Stone
Wholesale Bevel & Edge
Action Flooring
Home Theatre Install
Barcol Doors
South Side Ornamental
Gemco Fireplace
Water Works Ponds



At Top Floor Coating we operate unique, self-enclosed units that allow our staff to work in all environmental conditions in an efficient and effective manner. Whether installing our gypsum based underlayments and coatings, or our acoustic sound mats, Top Floor Coating provides the best service from start to finish.

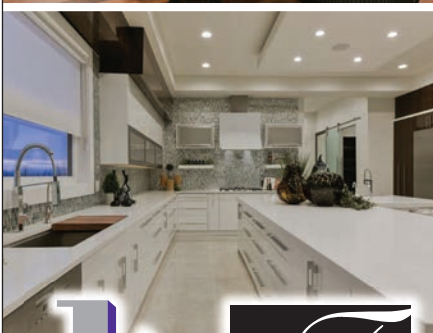
Top Floor Coating Inc.

#824 - 78 Avenue, Edmonton, Alberta T6P 1L7

D: 780.429.COAT (2628) | F: 780.468.1759

E: info@topfloorcoating.ca | www.topfloorcoating.ca

Building & Designing Lifestyles



Platinum Signature Homes Inc.

T : (780) 993-9787 | T : (780) 908-9787 | E : sunny@platinumsignaturehomes.com
25 Windermere Drive SW, Edmonton, Alberta T6W 0S2